

# SMT-Single and double head marking LCD LCB

Applicable to SMT production line, offline/online mode can be selected according to needs, automatic laser coding and reading detection can be realized through the precise positioning of equipment automatic transmission system and industrial vision system, and the process control of SMT enterprises in the production process can be realized.



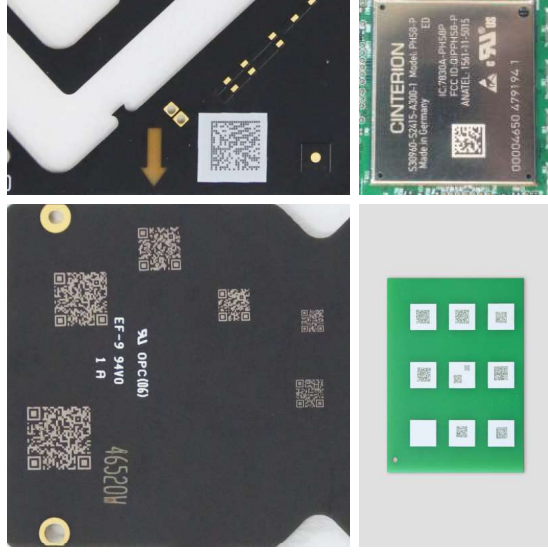
## Equipment characteristics

- Selection of world-class lasers with good beam quality, small heat affected area and high degree of refinement
- The coding function can support various general types of one-dimensional codes and two-dimensional codes, and can realize self-built online ratings, with a code reading rate of over 99.9%
- Self-developed puzzle software, friendly interface and easy to operate
- With different lasers, it is compatible with automatic marking of different materials such as green oil, white oil, black oil and metal shielding cover on PCB/FPC board
- Possess industry standard B ad Mark function, which can realize bad board skip or X board marking
- There are multiple processing methods such as single head/double head and double track for flexible selection
- Can be connected to IMES system to realize data intercommunication and data anti-duplication functions
- The automatic track width adjustment function easily adapts to the processing requirements of various format products
- The equipment has a compact structure, small size, and easy to be embedded in various SMT production lines

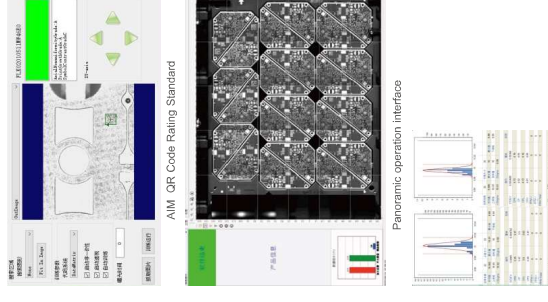
## Device parameters

Item	Main technical parameters			
Laser system	Laser light source	Co2	Fiber	UV
	Laser wavelength	10.6um	1064nm	355nm
	Average output power	5w / 10w / 20w		
	Circuit board size	50x50 -510x460(mm)		
	Circuit board thickness	0 - 5mm(0 - 0.8mm Carrier required)		
	Repeat positioning accuracy	±0.1mm (CCD positioning)		
Processing performance	Minimum width	0.1mm(DETAILED depending on material may be)		
	Minimum characters	0.5mm(DETAILED depending on material may be)		
	Support barcode type	Code128 / Code39 one-dimensional code DataMatrix / QR two-dimensional code		
	Into the plate directions	Left to right / Right to left		
Use environment	Power supply specifications	220V / 50Hz / 2.5KVA		
	Air supply specifications	0.5 - 0.7MP		
	Environmental requirements	Temperature -15-30°C / Humidity <50%		
	Overall size	1000mm(W) x 1600mm(L) x 1500mm(H)		

## Sample display



## SMT Professional marking software



High precision control system