



CX7000L X-Ray

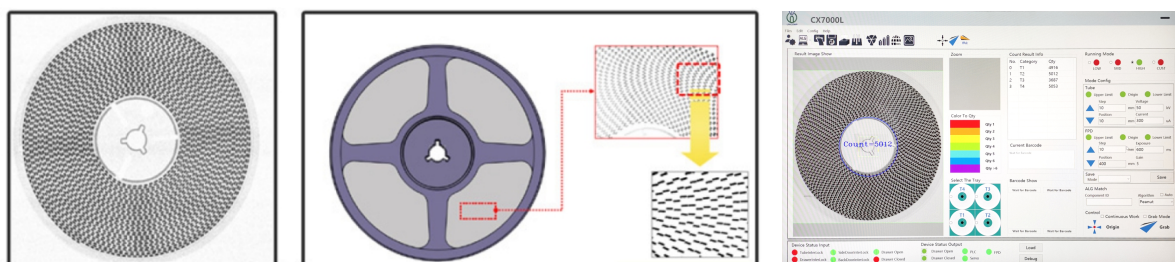
SMD Chip Counter

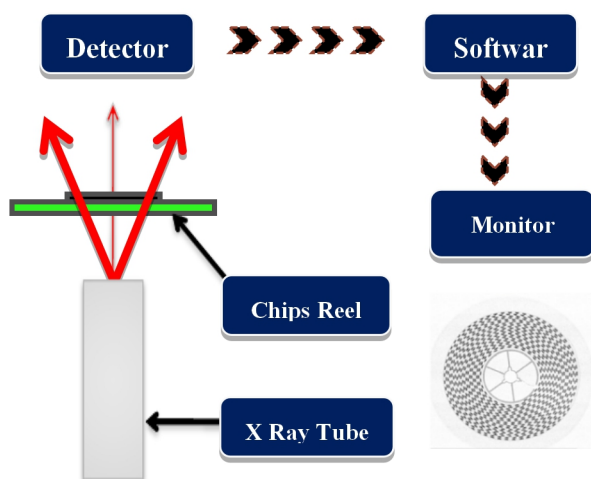


Features

- Automatic inspection, no need on programs switch for different components
- Fast speed and high accurate chip counting, reducing labor costs
- No chip damage or lost with non-destructive counting
- Compatible with 7"~17" tape & reels
- Automatic link with ERP & MES System, and storage system
- Shielded cabinet protection to guarantee Safety leakage of X-ray
- Fast counting Speed: 12~13s/Reel
- Inspection Accuracy: $\geq 99.9\%$
- Min. Package: 01005
- One-button operation, automatic counting
- Hand-operated label reading, new label printing and sticking
- Special advantage for incoming inspection and inventory management
- Real-time radiation leakage monitoring

X-ray Images





Main Configuration

1. Bar-code Scanner
2. X-ray System
3. Label Printer
4. Finger Printer Recognition System

Technical Specifications

| | | |
|-----------------------------|--|--|
| Equipment Features | Footprint (W*D*H) / Machine Weight | 1000 mm*1370 mm*1962 mm / 1160 kg |
| | Package | Plywood Case, 110 cm*145 cm*210 cm, Total 1450 kg |
| | Power Consumption | 1.1 kW |
| | Power Supply | AC 110~220V (±10%) 50Hz |
| | Working Mode | Off-line |
| System Computer | Operating System | Industrial PC, Windows OS , i7 CPU |
| | Monitor | 22" LCD |
| X-Ray Tube | Max. Voltage | 80 kV |
| | Max. Current | 700 μ A |
| | Focal Spot Size | 0.03 mm |
| Detector | FPD Detector Pixel Size | 139 μ m |
| | Effective Detection Area | 430*430 mm |
| | Pixel Matrix | 3072*3072 |
| | Frame Rates / AD Bits | 14 fps / 16 Bits |
| Detection Parameters | Inspection Tape & Real Size | 7"~17" |
| | Scan height | ≤88mm |
| | Maximum Inspection Speed | 7"~17" Tape & Real is less than 12s/Real, 7"*4 is less than 13s. |
| | Inspection Min. Component | 01005 |
| | Inspection Accuracy | ≥99.9% |
| Detectable item | Capacitors, resistors, inductors, beads, crystals, transistors, diodes, FETs, various types of resistors, bile capacitors, detectable connectors, integrated circuit chips, etc. | |
| Accessories | Barcode Scanning, Printer, Fingerprint Recognition System, | |

X-Ray Safety: All X-ray machines manufactured by Unicomp Technology meet the FDA-CDRH Regulation CFR 21 1020.40 Subchapter J for cabinet x-ray systems. The FDA - CDRH standard for cabinet x-ray systems states that radiation emission will not exceed. 5millirem a /hr.2"from any external surface. Our machines (**Leakage <1 μ Sv/h**) are typically 5-10 times less than the international standards,

■ Specifications are subject to change without notice, all trademarks are the property of the system maker.