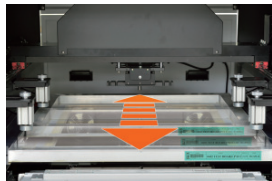


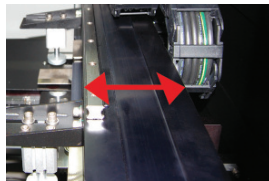
# NPS510E

Reputation of NPS510 faithful to the basics,  
reasonable price, user environment optimized  
printer



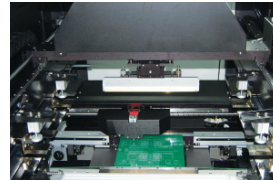
### Automatic Mask Moving System

Minimization of stage movement by moving the mask automatically to the optimal position according to the size of PCB, and realization of precise position accuracy



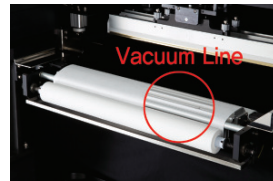
### Stable vision frame

High-accuracy position control by minimizing vibrations through rigid design of the vision frame where camera move



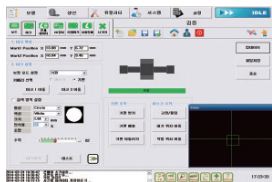
### Comfortable Mechanism

- Application of a highly rigid and low-centered platform
- Stage position control structure of X, Y, theta
- PCB clamping of Top/Edge



### Convenient Mask Cleaning system

To control possible range of wash liquid & vacuum absorption area



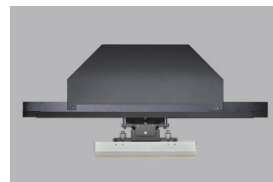
### User-friendly operating software

- Easy and simple process when registering a new model(Within 5 minutes)
- User can check production information, progress status, etc in a screen



### Flexible conveyor configuration

Convertible configuration into 1~3 steps according to the production environment



### Uniform pressure control of squeegee

Uniform pressure control in all the printing area by applying an accurate electronic pneumatic control device

## Specifications

	NPS510	NPS650	NPS510E
<b>Performance</b>			
Alignment Repeatability	±12.5μm	±12.5μm	±12.5μm
Cycle Time (Exclude Printing Time)	7 sec	8 sec	8 sec
Job Change Time	5 min		
<b>Print Parameter</b>			
Stencil Frame Size(WxD)	650mm × 550mm, 736mm × 736mm	650mm × 550mm, 736mm × 736mm, 800mm × 800mm	650mm × 550mm, 736mm × 736mm
Print Speed	2 ~ 400mm/sec	5 ~ 400mm/sec	
Print Pressure	4 ~ 30kgf	5 ~ 30kgf	4 ~ 30kgf (Option)
Squeegee Type	Metal(Standard), Urethane(Option)		
Mask Pattern Position	Center, Front		
<b>Vision</b>			
Fiducial Shape	■, ●, ▲, ◆, Image		
Field of View	10.4mm × 8.0mm(16.6μm)		
Camera	2 CCD Cameras (1 for Mask, 1 for PCB)		
Light Source	LED		
<b>PCB Handling</b>			
PCB Size(WxD)	50mm × 50mm ~ 510mm × 400mm	50mm × 50mm ~ 650mm × 400mm	50mm × 50mm ~ 510mm × 450mm
PCB Thickness	0.3 ~ 4.0mm (For 0.6mm or less, the use of a Vacuum Block recommended)		
PCB Warpage	±1.5mm		
Max. PCB Weight	2.5kg		
PCB Clamping	Edge Aligner, Top clamp		Edge Clamp / Top Clamp
Conveyor Width Control	Automatic		
<b>Operator Interface</b>			
Hardware	LCD 15", Mouse & Keyboard		
Software Operating System	Window XP Embedded		
<b>System Dimension</b>			
Width	1,450mm	1,340mm	1,200mm
Depth	1,540mm	1,370mm	1,400mm
Height	1,500mm	1,500mm	1,500mm
Weight	1,000kg	1,200kg	900kg
Power Requirements	Single-Phase, 110 ~ 240V, 50/60Hz, 3kVA		
Air Supply Requirements	4 ~ 5 bar @ 600~700 NL/min		